

RCA No. 260

Original

Sheet No. 1

Canceling

Sheet No.

RECEIVED

MAY 21 2004

State of Alaska
Regulatory Commission of Alaska

Bettles Telephone, Inc.

Bettles Telephone, Inc.
Tariff

Bettles Telephone, Inc hereby adopts, as if they had been originally filed by it, all tariffs, rules, notices, concurrences, provisions, authorities, power of attorney, or any other instruments of Alaska Telephone Company filed on or after March 1, 2004. By this notice, Bettles Telephone, Inc also adopts and ratifies all supplements and amendments to any of the above tariffs of Alaska Telephone Company

Maps and Service Areas Descriptions are included on sheets two through four of this tariff filing

Bettles Telephone, Inc.
P.O. Box 3222
Port Townsend, Washington 98368

Pursuant to U-02-104(21)

Tariff Advice No. 30-260

May 27, 2005

Effective

Issued By: Bettles Telephone, Inc.

By: _____

Michael Garrett

Title: Executive Vice President

RCA No. 260

Original

Sheet No. 2

Canceling

Sheet No.

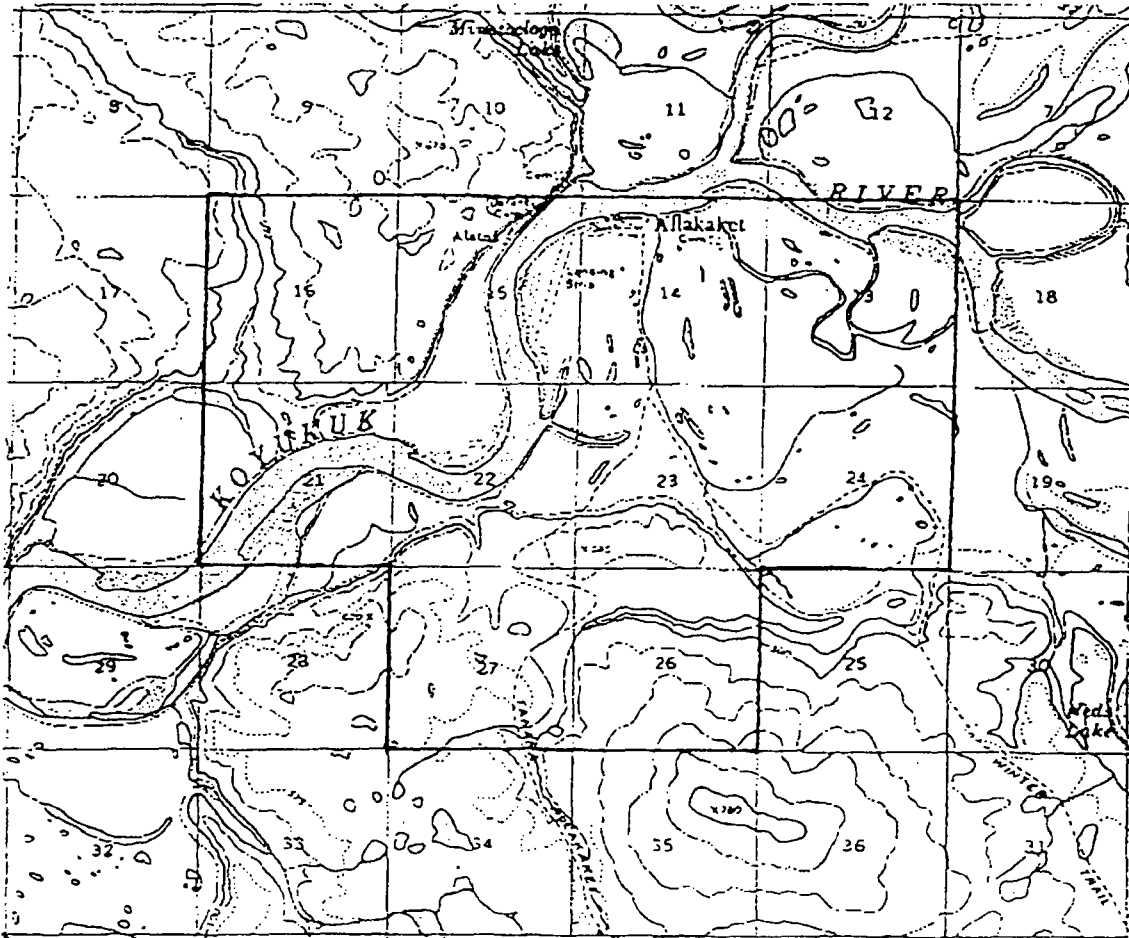
RECEIVED

MAY 21 2004

State of Alaska
Regulatory Commission of Alaska

Bettles Telephone, Inc.

Allakaket Service Area Map



Pursuant to U-02-104(21)

Tariff Advice No. 30-260

Effective

May 27, 2005

Issued By: Bettles Telephone, Inc.

By: _____
Michael Garrett

Title: Executive Vice President

RCA No. 260

Original

Sheet No. 3

Canceling

Sheet No.

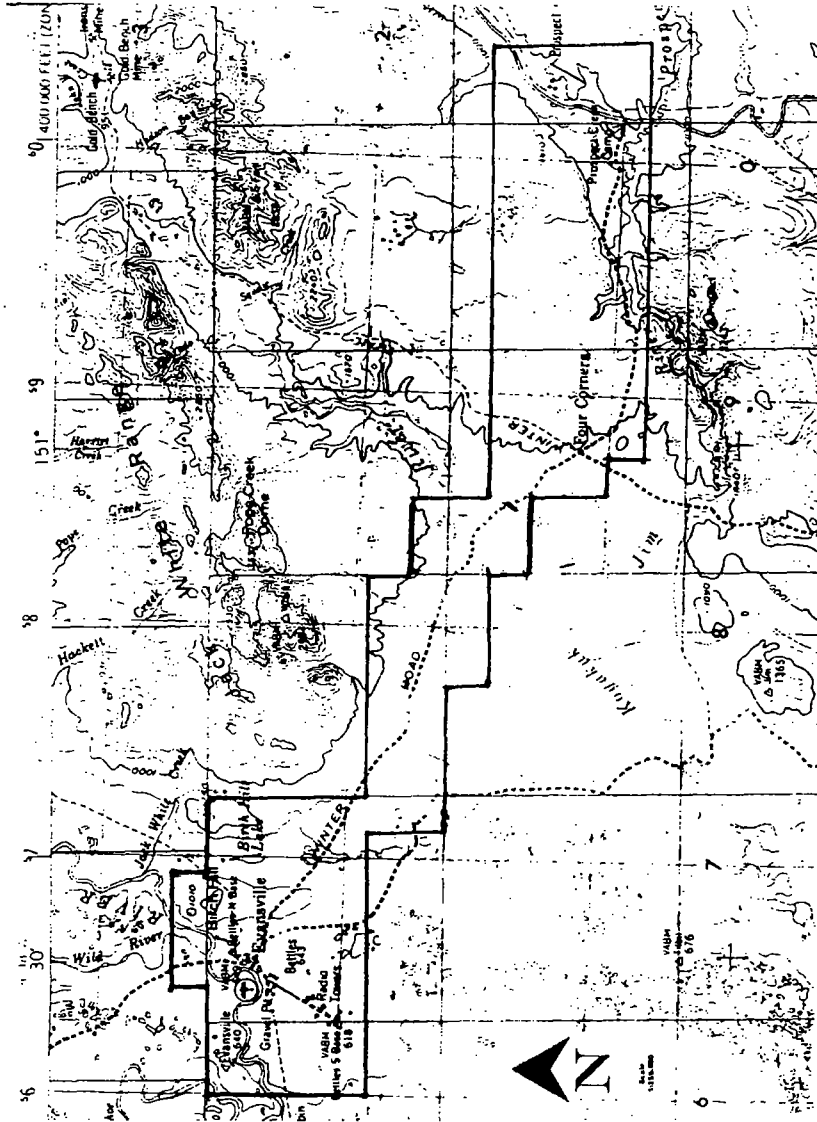
RECEIVED

MAY 21 2004

State of Alaska
Regulatory Commission of Alaska

Bettles Telephone, Inc.

Bettles Service Area Map



Pursuant to U-02-104(21)

Tariff Advice No. 30-260

Effective

May 27, 2005

Issued By: Bettles Telephone, Inc.

By: _____
Michael Garrett

Title: Executive Vice President

RCA No. 260

Original

Sheet No.

4

Canceling

Sheet No.

RECEIVED

MAY 21 2004

State of Alaska
Regulatory Commission of Alaska

Bettles Telephone, Inc.

Service Area Description

Bettles Exchange

Sections:

T23 N	R14 W	7, 8, 17, 18, 19, 20, 29, 30
T23 N	R15 W	7-30
T23 N	R16 W	5-16, 21-27
T23 N	R17 W	1-3
T24 N	R16 W	31, 32
T24 N	R17 W	19-36
T24 N	R18 W	1-25, 36
T24 N	R19 W	1, 2, 11, 12, 13, 14, 23, 24
T25 N	R18 W	32-34

Allakaket Exchange

Sections:

T20 N	R24 W	13-16, 21-24, 26-27
-------	-------	---------------------

(All coordinates in reference to the Fairbanks Meridian)

Pursuant to U-02-104(21)

Tariff Advice No. 30-260

Effective

May 27, 2005

Issued By: Bettles Telephone, Inc.

By:

Michael Garrett

Title: Executive Vice President